

# EDITOR HFe Series

HIGH FREQUENCY X-RAY GENERATORS

## X-Ray Generators for Diagnostic Radiography

technical specifications



[spellmanhv.com](http://spellmanhv.com)

# EDITOR HFe for Radiography

## EDITOR HFe Series

HIGH FREQUENCY X-RAY GENERATORS

- **Modular, back-plane design for simplified serviceability and support**
- **Isolated circuit breakers improve trouble shooting and increase safety: this gives service engineers the ability to power down specific sections of the generator as needed**
- **Extensive tube library: supporting most X-Ray tubes on the market**
- **Comprehensive PC service utility tool**

As the world's leading independent manufacturer of X-Ray generators and Monoblock® X-Ray sources, Spellman High Voltage is proud to offer the EDITOR HFe Series of high frequency diagnostic X-Ray generators.

### Typical Applications

- General Radiography
- Digital Radiography
- Tomography
- Image Guided Radiation Therapy

### EDITOR HFe Controller Options

Spellman EDITOR HFe X-Ray generators are available for either integrated and non-integrated X-Ray rooms.



#### Non-Integrated

EDITOR HFe full-featured membrane console available. \*Consult factory regarding released DR interfaces



#### Integrated

Connect the EDITOR HFe DR Interface board to the integrated DR workstation, allowing simplified control of the generator techniques from the computer workstation, only using the EDITOR HFe Mini Console for POWER ON/OFF and PREP/EXPOSE buttons

### Radiographic Options

- Interface for Automatic Exposure Control
- Interface for dose measuring devices and workstations offering integrated readouts
- High and Low Speed Starter
- Flexible cabinet options to meet your space requirements
- Input power options: 1Ø and 3Ø configurations available
- Output power options: 40kW, 50kW, 65kW, 80kW
- Windows based simplifies integration of the EDITOR HFe generator to any workstation



**EDITOR HFe-1M Vertical Cabinet**  
(cover removed for clarity)

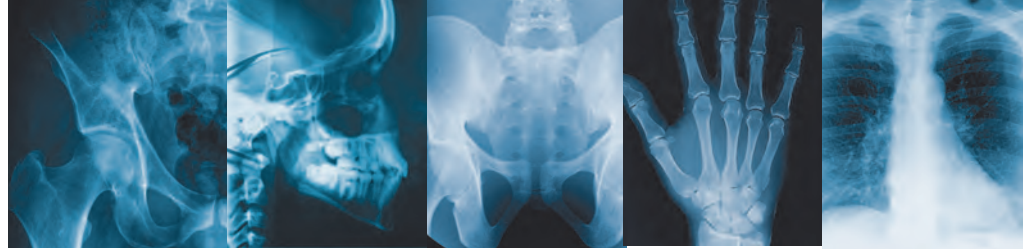


**EDITOR HFe-S Compact Cabinet**  
(cover removed for clarity)



**EDITOR HFe-UT Under Table Cabinet**

# SPECIFICATIONS



MODEL	EDITOR HFe 401	EDITOR HFe 501	EDITOR HFe 601	EDITOR HFe 801
<b>Output Power</b>	<b>40kW</b>	<b>50kW</b>	<b>65kW</b>	<b>80kW</b>
mA/kW @ 0, 1s				
@ 40kV	400 / 16	400 / 16	400 / 16	400 / 16
@ 60kV	500 / 30	650 / 39	800 / 48	800 / 48
@ 80kV	500 / 40	625 / 50	800 / 64	800 / 64
@ 100kV	400 / 40	500 / 50	650 / 65	800 / 80
@ 125kV	320 / 40	400 / 50	520 / 65	640 / 80
@ 150kV	266 / 40	330 / 50	430 / 65	530 / 80
Continuous falling load (with AEC)	Yes			
kV range for exposure	40-150kV			
Increments of	1kV			
or in (steps)	27 steps			
kV accuracy	±(5%+1kV)			
mA range for exposure	10-500 mA	10-650 mA	10-800 mA	10-800 mA
in	18 steps	19 steps	20 steps	20 steps
mA accuracy	±(6% + 1mA) ±(10% + 1mA for ms≤10ms)			
Max. mA @ max kV	500mA @ 80kV	650mA @ 76kV	800mA @ 81kV	800mA @ 100kV
ms range for exposure	1-6300 ms			
in	38 steps			
ms accuracy	±(4% + 1ms) ±(10% + 1ms for ms≤10ms)			
mAs range	0.5-600 mAs			
in	32 steps			
mAs range (optional)	0.5-1000 mAs			
in	34 steps			
mAs accuracy	±(10% +0, 2mAs)			
Automatic Exposure Control (AEC) interface	Optional			
AEC mAs range	0.5-600 mAs			
Interface for Air Kerma/Dose Area Product	Optional			
Printer and PC interface	RS-232			
High Speed Starter HSS1/HSS2	Optional			
Generator operating control console	Optional			
Digital integration without console	Ethernet and RS-232			

## Available Input/Mains Configurations

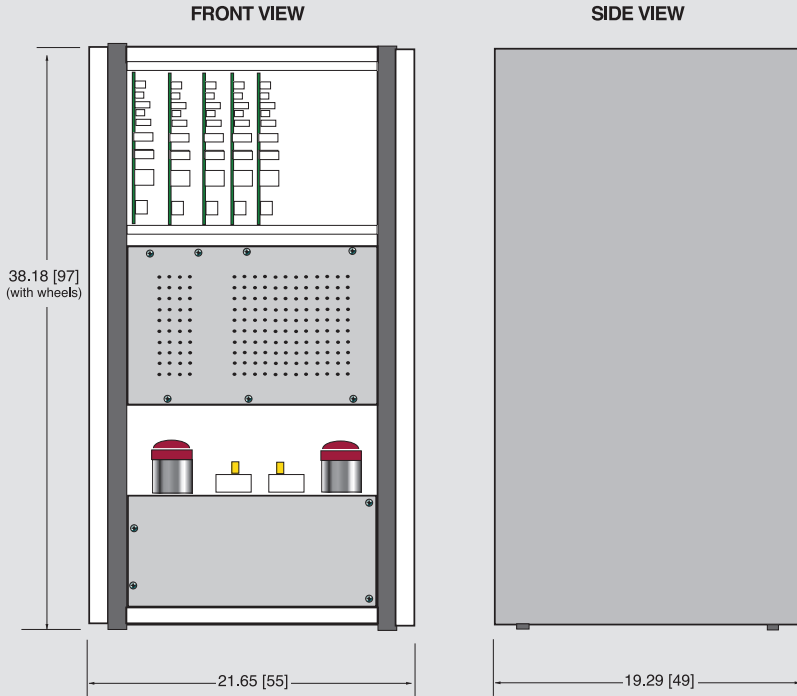
Generator Output Power	Input Power Options
40 kW (150KV, 500mA, 6300ms, 600mAs max.)	1Ø:208/230 VAC, 3Ø 208/230 VAC, 3Ø 400/480 VAC
50 kW (150KV, 650mA, 6300ms, 600mAs max.)	3Ø 400/480 VAC
65 kW (150KV, 800mA, 6300ms, 600mAs max.)	3Ø 400/480 VAC
80 kW (150KV, 1,000mA, 6300ms, 600mAs max.)	3Ø 400/480 VAC

Please consult factory regarding product configuration availability and regulatory requirements for specific markets



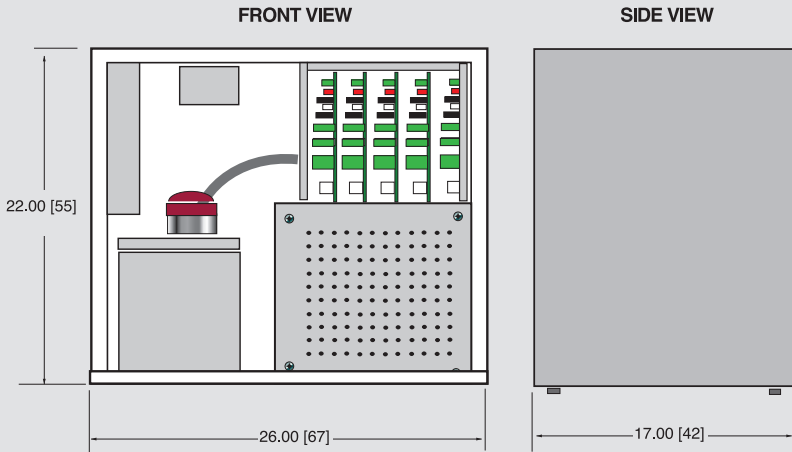
## EDITOR HFe 401-801

STANDARD CABINET 266lbs (121kg)  
DIMENSIONS: IN. (CM)



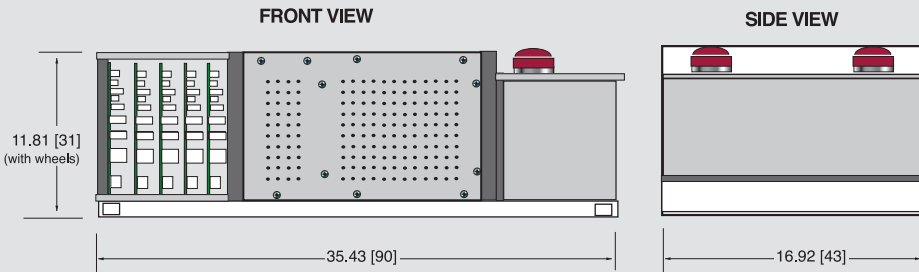
## EDITOR HFe 401-801

S CABINET 165lbs (75kg)



## EDITOR HFe 401-801

UNDER TABLE CABINET 165lbs (75kg)



### Spellman USA and Corporate HQ

475 Wireless Blvd.  
Hauppauge, NY 11788  
United States  
tel: +1-631-630-3000  
fax: +1-631-435-1620  
email: sales@spellmanhv.com

### Spellman Valhalla NY USA

One Commerce Park  
Valhalla, NY 10595  
United States  
tel: +1-914-686-3600  
fax: +1-914-686-5424

### Spellman UK

Broomers Hill Park #14, Broomers Hill  
Pulborough, West Sussex,  
United Kingdom RH20 2RY  
tel: +44 (0) 1798 877000  
fax: +44 (0) 1798 872479

### Spellman Japan

4-3-1 Kamitoda,  
Toda-shi, Saitama-ken,  
Japan 335-0022  
tel: +81 (0) 48-447-6535  
fax: +81 (0) 48-445-7280

### Spellman China

Spellman High Voltage Electronics (SIP) Co Ltd.  
No. 86 Jinjiang Road,  
Suzhou Industrial Park 215217 China  
tel: +86-512-67630010  
fax: +86-512-67630030

### Spellman High Voltage Korea Co.,Ltd.

#B-720, BRC Smart Valley,  
Song Do Mirae-ro 30,  
Yeonsu-Gu, Incheon, Korea 406-081  
tel: +82-32-719-2300  
fax: +82-32-720-4300

### Spellman de Mexico – Plant 2

Avenida Pedregal # 2 Esquina  
Avenida Chapultepec  
Parque Industrial FINSA Oriente  
Matamoros, Tamps., Mexico 87340  
tel. +52 868 150-1200

### Spellman de Mexico – Plant 3

Avenida Chapultepec # 101 Esquina  
Avenida Horizonte  
Parque Industrial FINSA Oriente  
Matamoros, Tamps., Mexico 87340  
tel. +52 868 150-1200

### Spellman High Voltage GmbH

Josef-Baumann-Straße 23  
44805 Bochum  
Germany  
tel: +49 (0) 234 87906-0

